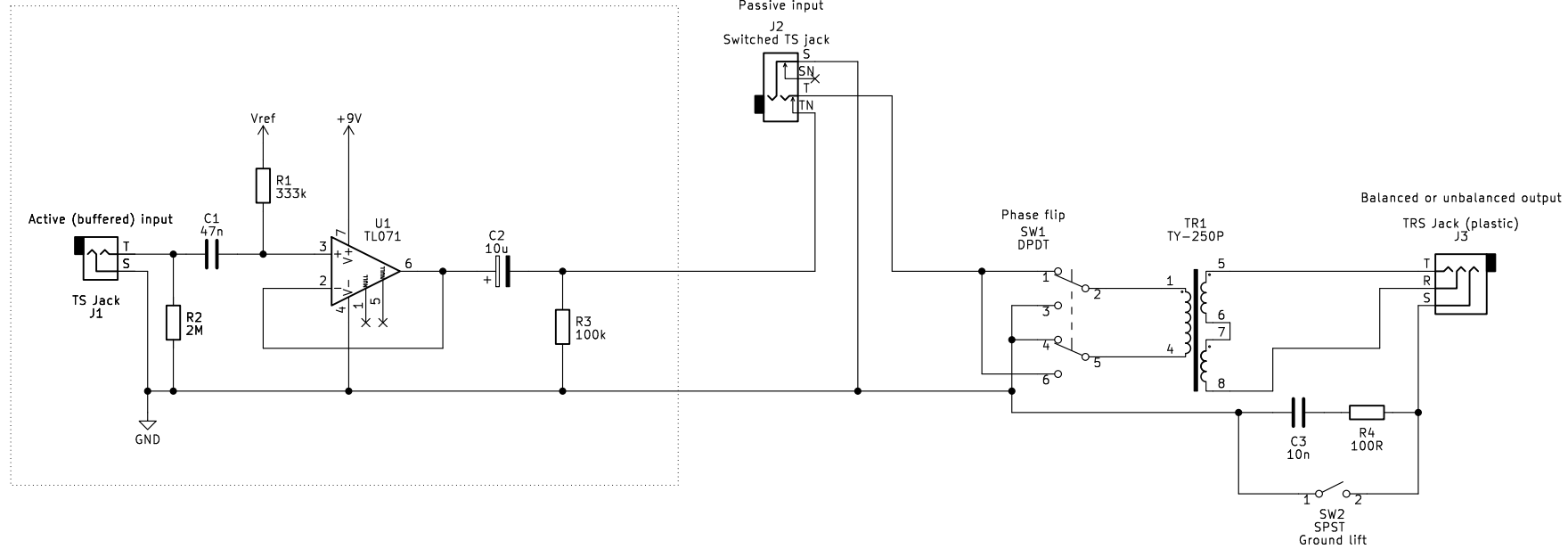
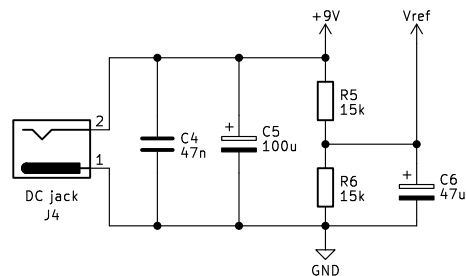


Buffer



Power section



Notes:

- TR1 is a symmetrical (1:1) transformer with 1k input and output impedance and 20–20kHz frequency response.
- Passive input will only work with a low impedance (<1k) signal.
- J3 must be completely isolated from enclosure for ground lift switch to work.
- C3 and R4 form a RC network to suppress RFI. For best results, C6 should be a ceramic disc capacitor and R5 a carbon film resistor.
- C4 is optional but can help reducing noise.

Buffers and isolates your guitar signal from the output.
It provides switches for ground lift and phase flip.

Circle Circuits

Sheet: /

File: line-isolator.kicad_sch

Title: Line isolator

Size: A4 Date: 2024-04-11

KiCad E.D.A. kicad (7.0.0-0)

Rev:

Id: 1/1